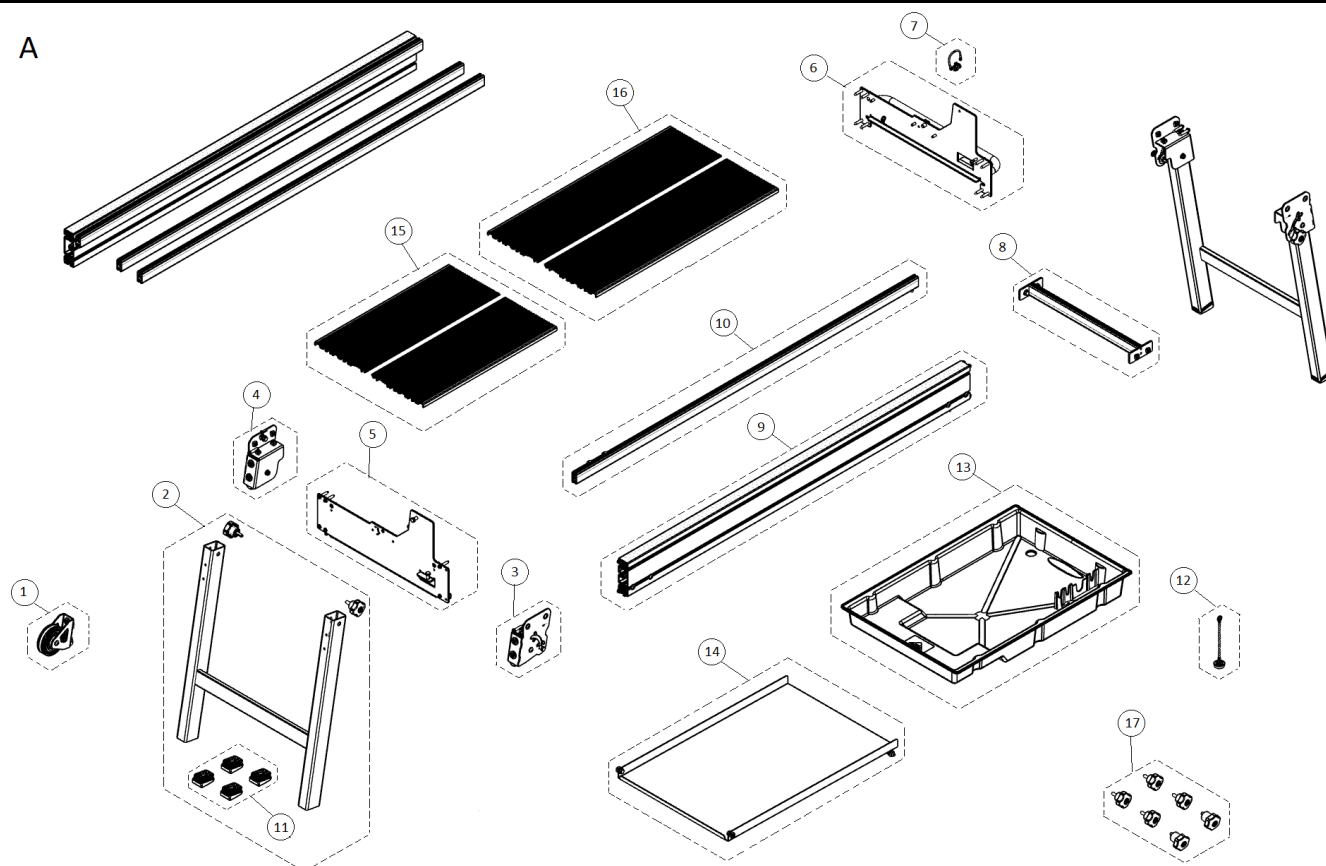


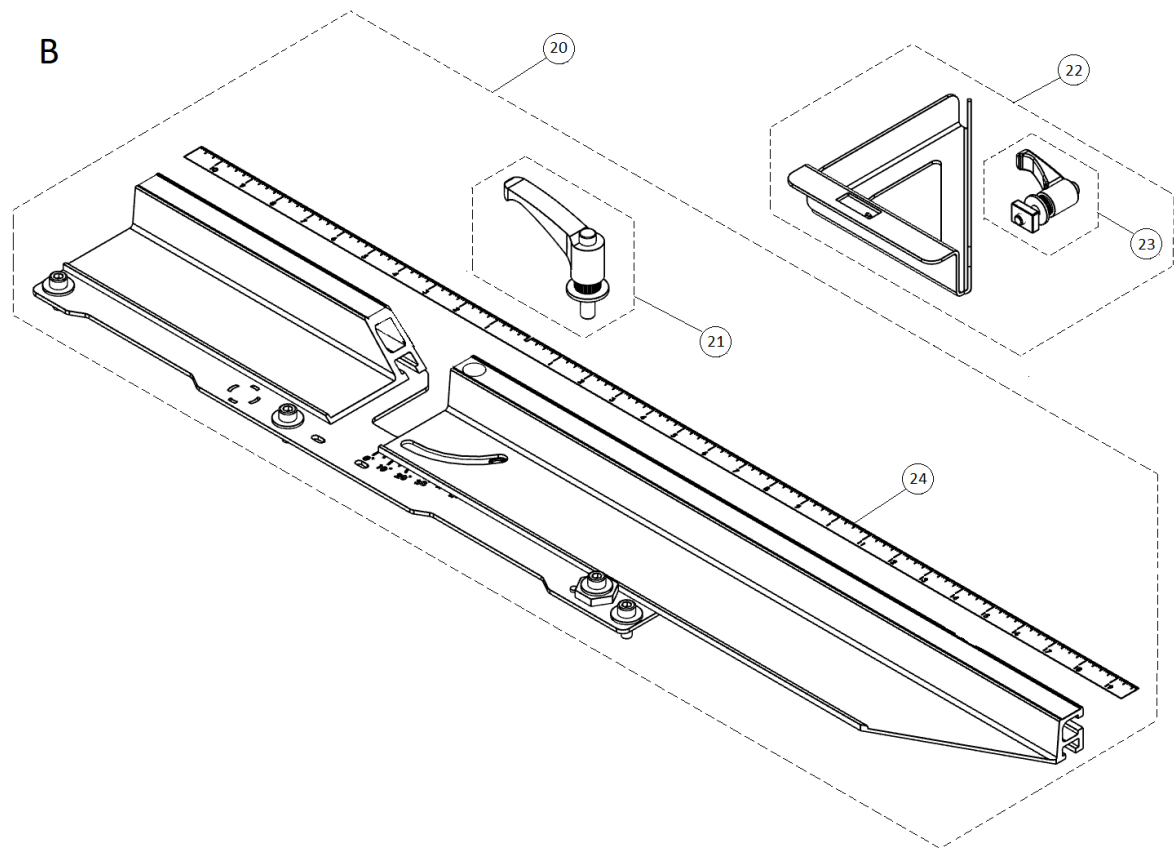
Part-list	ES	EN	Prod.
	GRUPO A	GROUP A	Pag. 2
888 88	GRUPO B	GROUP B	Pag. 3
	GRUPO C	GROUP C	Pag. 4
888 88	GRUPO D	GROUP D	Pag. 5
	GRUPO E	GROUP E	Pag. 6
888 88	GRUPO F	GROUP F	Pag. 7
	GRUPO F1	GROUP F1	Pag. 8

Prod	ES	EN	From serial num:
52944	DS-250-N 1500 120V 60HZ INCH C/DISCO	DS-250-N 1500 120V 60HZ INCH C/DISCO	904
52942	DS-250-N 1500 220V 60HZ -CORT.ELEC.	DS-250-N 1500 220V 60HZ	654
52940	DS-250-N 1500 230V 50HZ -CORT.ELEC.	DS-250-N 1500 230V 50HZ	14921
52934	DS-250-N 1300 120V 60HZ INCH C/DISCO	DS-250-N 1300 120V 60HZ INCH C/DISCO	5721
52930	DS-250-N 1300 230V 50HZ -CORT.ELEC.	DS-250-N 1300 230V 50HZ	52986
52920	DS-250-N 1000 230V 50HZ -CORT.ELEC.	DS-250-N 1000 230V 50HZ	835

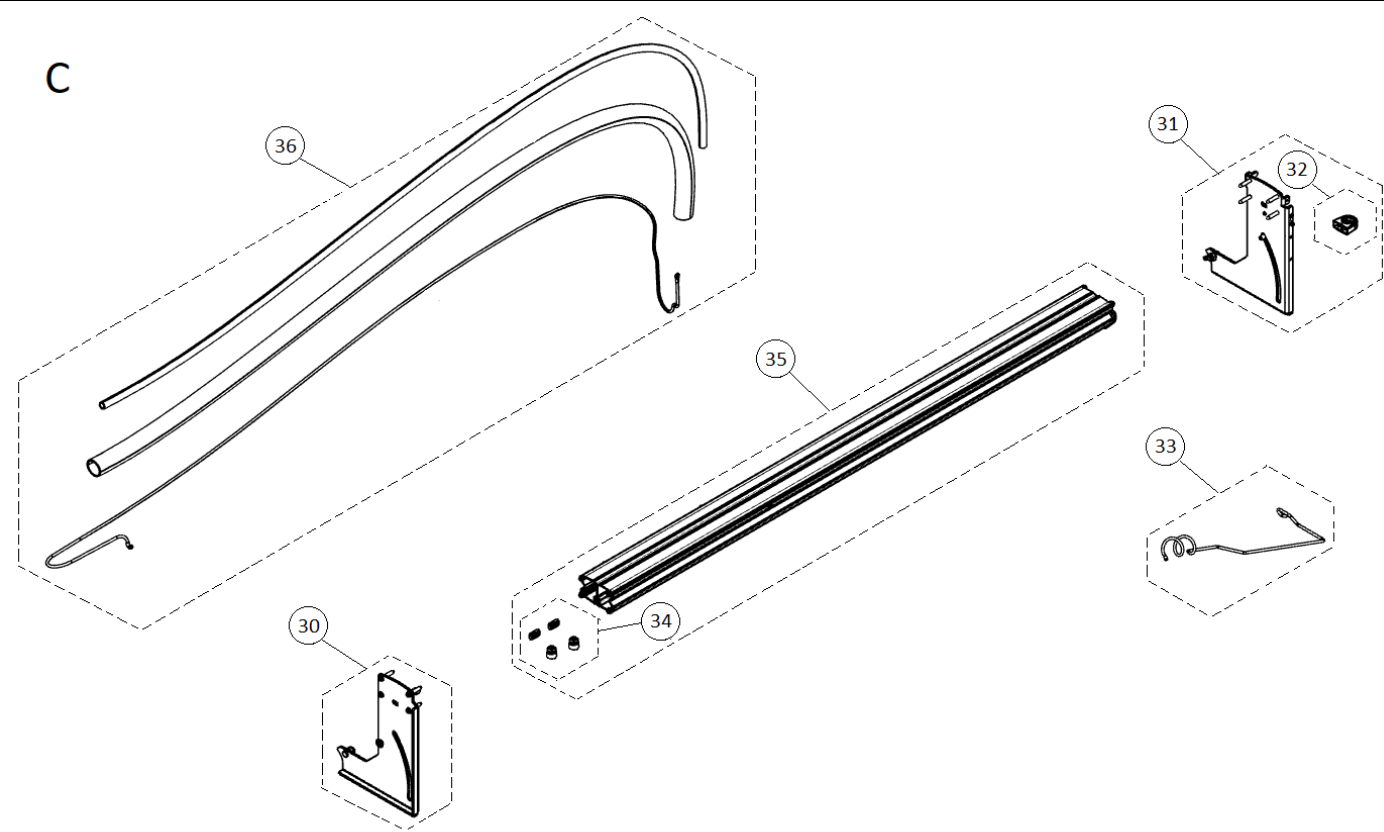
A



Part-list	ES	EN	Prod.		
1	27804	2	REC.RUEDA REF:27804	SP.WHEEL REF:27804	
2	27803	2	REC.PATA REF:27803	SP.LEG REF:27803	
3	27805	2	REC.SOPORTE PATAS DER. REF:27805	SP.RIGHT LEGS SUPPORT REF:27805	
4	27806	2	REC.SOPORTE PATAS IZQ.REF:27806	SP.LEFT LEGS SUPPORT REF:27806	
5	27807	1	REC.FRONTAL DEL.REF:27807	SP.FRONT HEAD REF:27807	
6	27808	1	REC.FRONTAL TRAS.REF:27808	SP.FRONT FOREHEAD REF:27808	
7	27267	1	REC.CABLE TIERRA BRAZO REF:27267	SP.GROUND CABLE ARM REF:27267	
8	27259	1	REC.DISTANCIADOR CHASIS REF:27259	SP.CHASSIS SPACER REF:27259	
9	27374	2	REC.PERFIL CHASIS DS 1500	SP.DS 1500 CHASSIS PROFILE	52940, 52942, 52944
9	27305	2	REC.PERFIL CHASIS 1300 REF:27305	SP.CHASSIS PROFILE 1300 REF:27305	52930, 52934
9	27262	2	REC.PERFIL CHASIS 1000 REF:27262	SP.CHASSIS PROFILE 1000 REF:27262	52920
10	27379	4	REC.PERFIL ESTRUCTURA DS 1500	SP.STRUCTURE PROFILE DS 1500	52940, 52942, 52944
10	27306	4	REC.PERFIL ESTRUCTURA 1300 REF:27306	SP.STRUCTURE PROFILE 1300 REF:27306	52930, 52934
10	27263	4	REC.PERFIL ESTRUCTURA 1000 REF:27263	SP.STRUCTURE PROFILE 1000 REF:27263	52920
11	27831	1	REC.KIT CONTERAS REF:27831	SP.END CAPS KIT REF:27831	
12	57260	1	REC.TAPON CON CADENA Ø 35	SP.PLUG WITH CHAIN Ø 35	
13	27261	1	REC.DEPOSITO REF:27261	SP.TANK REF:27261	
14	27380	1	REC.DECANTADOR DS 1500	SP.DECANTER DS 1500	52940, 52942, 52944
14	27371	1	REC.DECANTADOR 1300 REF:27371	SP.DECANTER 1300 REF:27371	52930, 52934
14	27260	1	REC.DECANTADOR 1000 REF:27260	SP.DECANTER 1000 REF:27260	52920
15	57243	1	REC.JUEGO MESAS CORTAS	SP.SHORT TABLE SET	52920, 52940, 52942, 52944
16	57242	2	REC.JUEGO MESAS LARGAS	SP.LONG TABLE SET	52930, 52934, 52940, 52942, 52944
17	27809	1	REC.KIT POMOS REF:27809	SP.KNOBS KIT REF:27809	

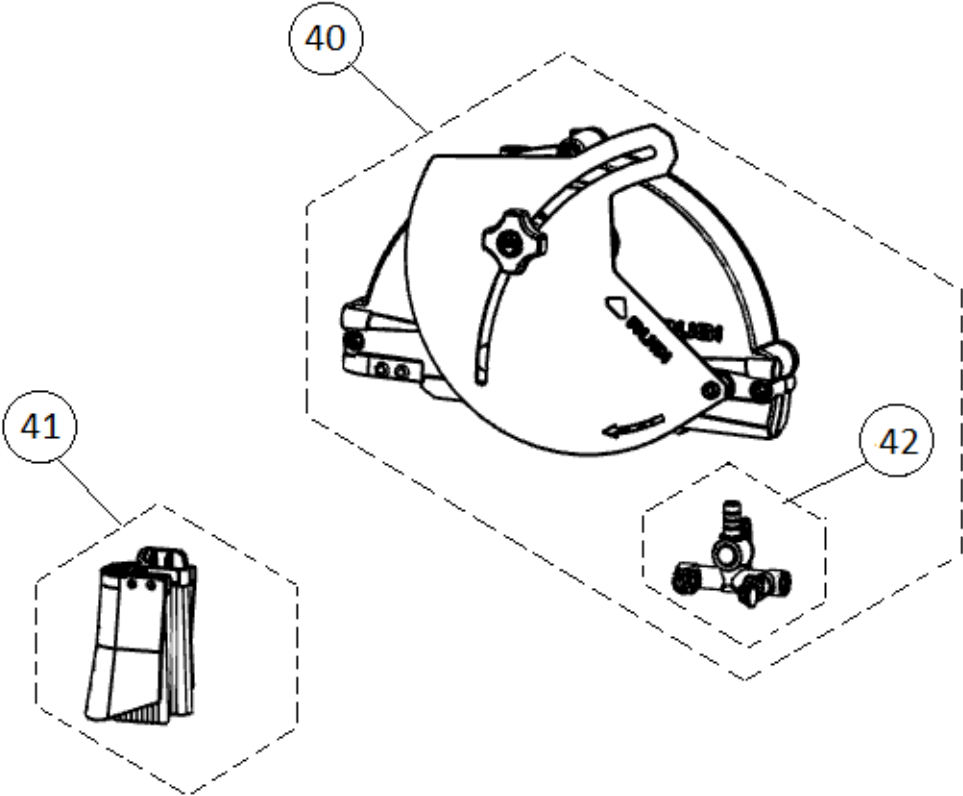


Part-list		ES	EN	Prod.	
20	27269	1	REC.TOPE MESA REF:27269	SP.TABLE TOP REF:27269	
21	56879	1	REC.MANETA TOPE MESA REF:56879	SP.HANDLE TABLE STOP REF:56879	
22	54843	1	REC.TOPE LATERAL REF:54843	SP.SIDE STOP REF:54843	
23	52823	1	REC.MANETA TOPE 45°	SP.HANDLE 45° STOP	
24	27835	1	REC.CINTA METRICA INCH REF:27835	SP.TAPE MEASURE INCH REF:27835	52934, 52944
24	27834	1	REC.CINTA METRICA MM REF:27834	SP.TAPE MEASURE MM REF:27834	



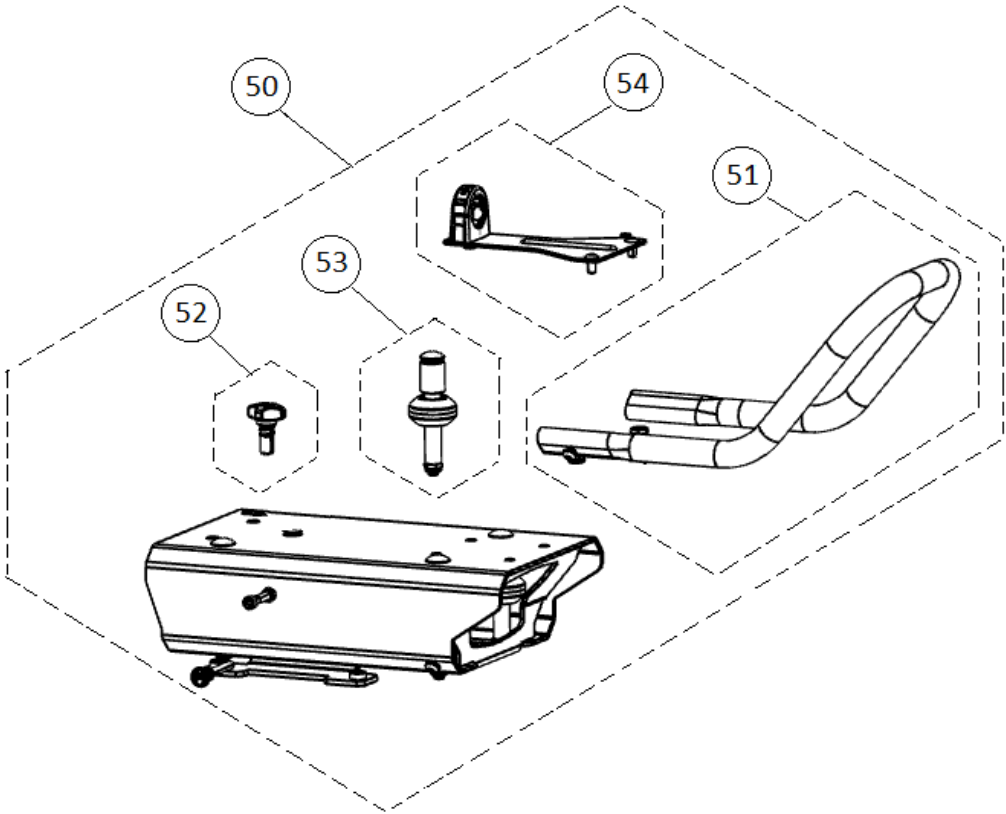
Part-list			ES	EN	Prod.
30	51872	1	REC.BRAZO ANTERIOR DS	SP.FRONT ARM DS	
31	51871	1	REC.BRAZO POSTERIOR DS	SP.REAR ARM DS	
32	56875	2	REC.GRAPA TUBO COARRUGADO	SP.CORRUGATED PIPE CLAMP	
33	56678	1	REC.ALZADOR REF:56678	SP.LIFTER REF:56678	
34	27274	1	REC.FRENO RECORRIDO GUIA REF:27274	SP.BRAKE TRAVEL GUIDE REF:27274	
35	51873	1	REC.GUIA DS 1500	SP.DS 1500 GUIDE	52940, 52942, 52944
35	27273	1	REC.GUIA 1300 REF:27273	SP.GUIDE 1300 REF:27273	52930, 52934
35	27272	1	REC.GUIA 1000 REF:27272	SP.GUIDE 1000 REF:27272	52920
36	27812	1	REC.KIT TUBOS 1500 DS	SP.TUBE 1500 DS	52940, 52942, 52944
36	27811	1	REC.KIT TUBOS 1300 REF:27811	SP.TUBE 1300 KIT REF:27811	52930, 52934
36	27810	1	REC.KIT TUBOS 1000 REF:27810	SP.TUBE 1000 KIT REF:27810	52920

D



Part-list		ES	EN	Prod.
40	56659	1	REC.PROTECTOR DISCO DS	SP.DS DISK PROTECTOR
41	56654	1	REC.ZERO DUST REF:56654	SP.ZERO DUST REF:56654
42	27280	1	REC.REGULADOR CAUDAL	SP.FLOW REGULATOR

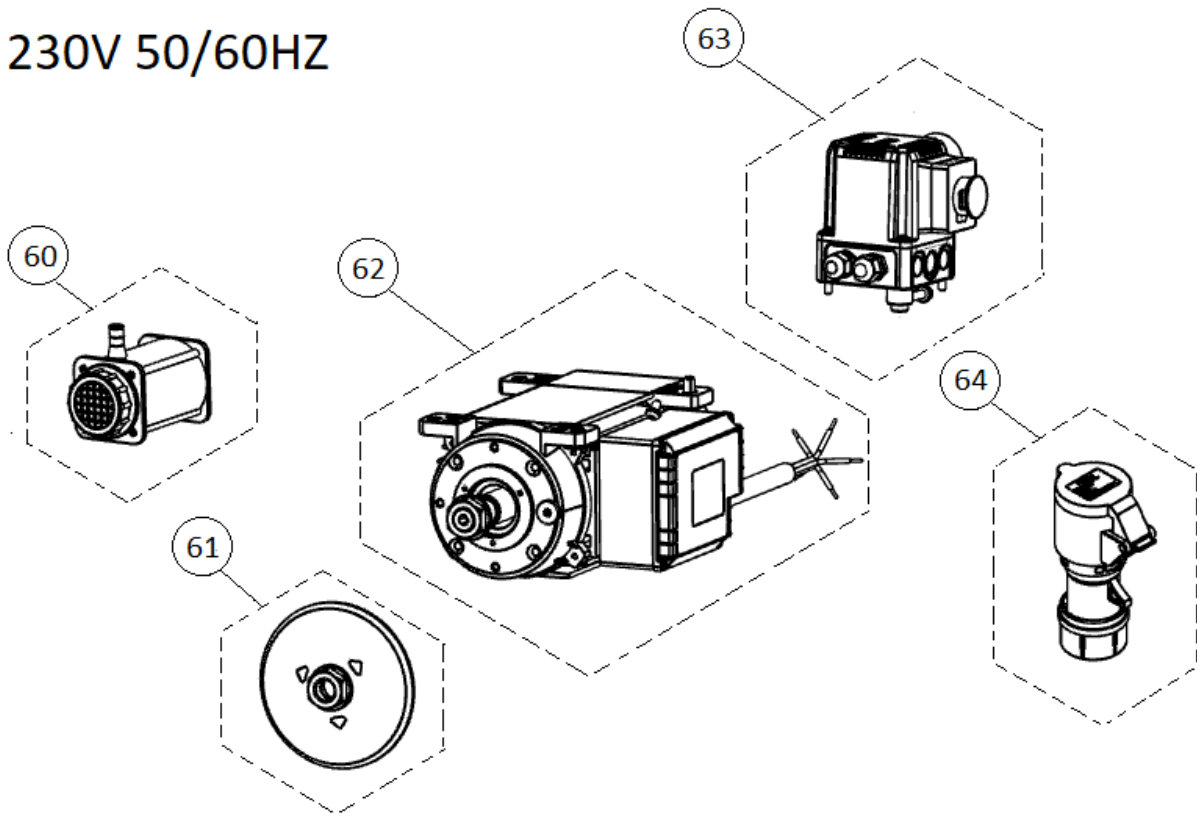
E



Part-list				ES	EN	Prod.
50	51870	1	REC.CARRO DS		SP.DS TROLLEY	
51	27295	1	REC.ASA CARRO REF:27295		SP.HANDEL TROLLEY REF:27295	
52	51868	1	REC.FRENO CARRO DS		SP.DS TROLLEY BRAKE	
53	27297	4	REC.RUEDA CARRO REF:27297		SP.TROLLEY WHEEL REF:27297	
54	51869	1	REC.FIJACION TUBO COARRUGADO DS 1500		SP.CORRUGATED PIPE FIXATION DS 1500	52940, 52942, 52944
54	27291	1	REC.FIJACIÓN TUBO COARRUGADO REF:27291		SP.FIXING CORRUGATED PIPE REF:27291	52920, 52930, 52934

F

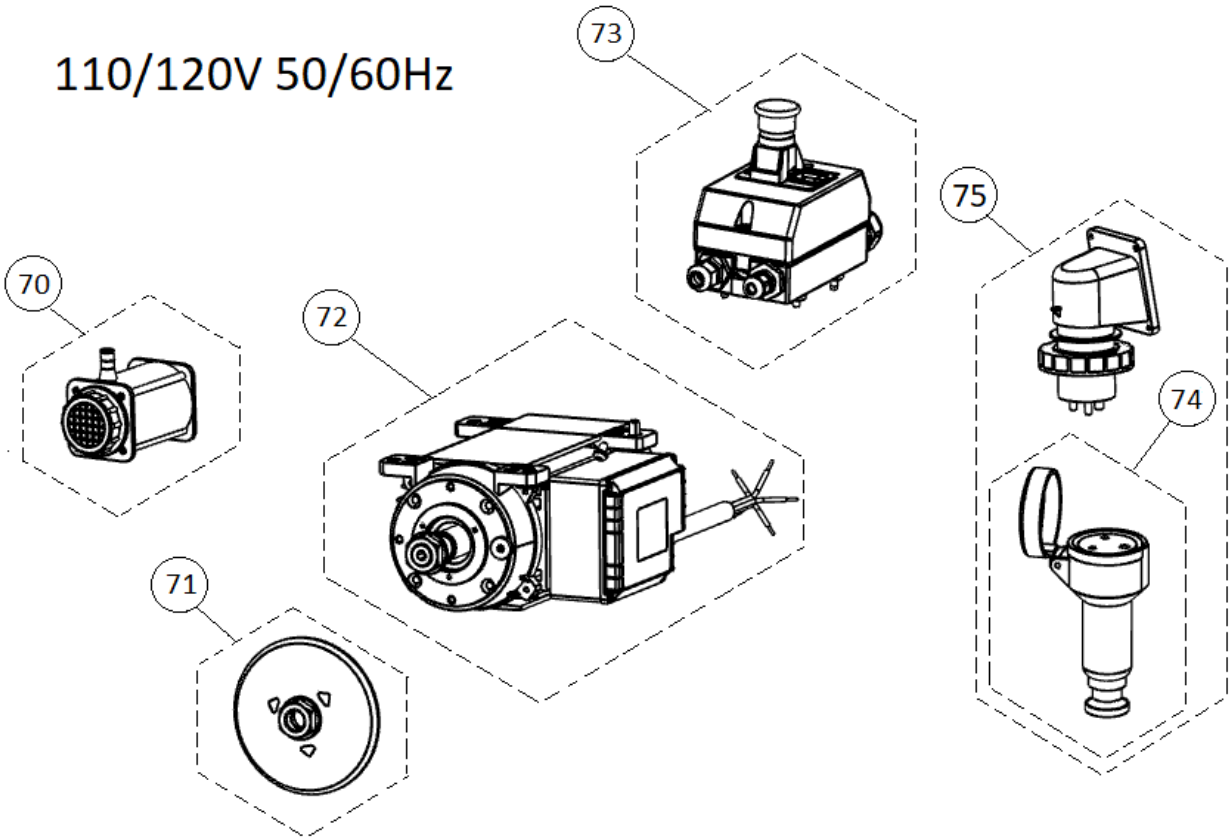
230V 50/60HZ



Part-list			ES	EN	Prod.
60	56973	1	REC.BOMBA DE AGUA B200 3,6M 230V	SP.B-200 SPARE WATER PUMP 230V	52920, 52930, 52940, 52942
61	27815	1	REC.PLATOS DS	SP.FLANGES DS	52920, 52930, 52940, 52942
62	27817	1	REC.MOTOR 220V 60HZ REF:27817	SP.MOTOR 220V 60HZ REF:27817	52942
62	27816	1	REC.MOTOR 230V 50HZ REF:27816	SP.MOTOR 230V 50HZ REF:27816	52920, 52930, 52940
63	56670	1	REC.ARRANCADOR 230V 60HZ REF:56670	SP.STARTER 230V 60HZ REF:56670	52942
63	56669	1	REC.ARRANCADOR 230V 50HZ REF:56669	SP.STARTER 230V 50HZ REF:56669	52920, 52930, 52940
64	27832	1	REC.BASE AEREA REF:27832	SP.WANDER SOCKET REF:27832	52920, 52930, 52940, 520942

F1

110/120V 50/60Hz



Part-list			ES	EN	Prod.
70	56974	1	REC.BOMBA DE AGUA B200 3,6M 110V	SP.B-200 SPARE WATER PUMP 110V	52934, 52944
71	27815	1	REC.PLATOS DS	SP.FLANGES DS	52934, 52944
72	27839	1	REC.MOTOR 110V 50HZ REF:27839	SP.MOTOR 110V 50HZ REF:27839	
72	27818	1	REC.MOTOR 120V 60HZ REF:27818	SP.MOTOR 120V 60HZ REF:27818	52934, 52944
73	51874	1	REC.ARRANCADOR 110V USA REF:51874	SP.STARTER 110V USA REF:51874	52934, 52944
73	27836	1	REC.ARRANCADOR 110V 50HZ REF:27836	SP.STARTER 110V 50HZ REF:27836	
74	27833	1	REC.BASE AEREA USA REF:27833	SP.WANDER SOCKET USA REF:27833	52934, 52944
75	27813	1	REC.ADAPT.ENCHUFE 2P-T MACHO REF:27813	SP.2P+T MALE PLUG ADAPTER REF:27813	52934, 52944